

RURAL COMMUNITY ASSETS FUND

TECHNICAL ASSISTANCE CALL
Thursday, May 25, 2017



volunteerflorida

VOLUNTEER FLORIDA

Volunteer Florida was established in 1994 by the Florida Legislature to administer grants under the National and Community Service Trust Act of 1993.

Volunteer Florida is the Governor's lead agency for volunteerism and national service in Florida.

Volunteer Florida is governed by a Board of Commissioners appointed by the Governor and approved by the Florida Senate.

Volunteer Florida is the lead agency for volunteers and donations before, during and after disasters.



RURAL COMMUNITY ASSETS FUND

Volunteer Florida's Rural Community Assets Fund (RCAF) will allow grantees to:

recruit, equip and mobilize volunteers in eligible rural areas across the state to address the acute educational needs of underserved children and youth.

- \$100,000 total in funding and training support for grantee participation in the FY2017-2018 RCAF program
- Respondents may request between \$5,000 and \$10,000
- Must provide a 25% cash or in-kind match.

Grantees will receive comprehensive training, funding for program enhancements and ongoing technical assistance, and coaching to establish or strengthen existing volunteer programs.



volunteerflorida

APPLICANT ELIGIBILITY

Your organization must be one of the following to be eligible:
a public or private nonprofit organization, including faith- or other community-based; institution of higher education; government entity within a state or territory (city, county); labor organization; partnership or consortia; Indian Tribe.

501(c)3

501(c)4 04

501(c)6 06

Public Foundation A

Private Foundation B

Charitable Organization

Private Operating Foundation

Private Non-operating Foundation

Suspense

509(a)(1)

509(a)(2) under 170(b)(1)(A)(vii)

509(a)(3) under 170(b)(1)(A)(viii)

509(a)(4)

Municipality

Indian Tribes



volunteerflorida

APPLICANT ELIGIBILITY

Respondents must have experience meeting educational needs for underserved children or youth in early childhood education settings or the K-12 education system.

This experience need not be in an eligible rural area, but programming funded through RCAF **must** occur in an eligible rural area.

Respondents must currently have or plan to have a service location in, or volunteers deployed to, an eligible rural area.



volunteerflorida

VOLUNTEER MANAGEMENT PRACTICES

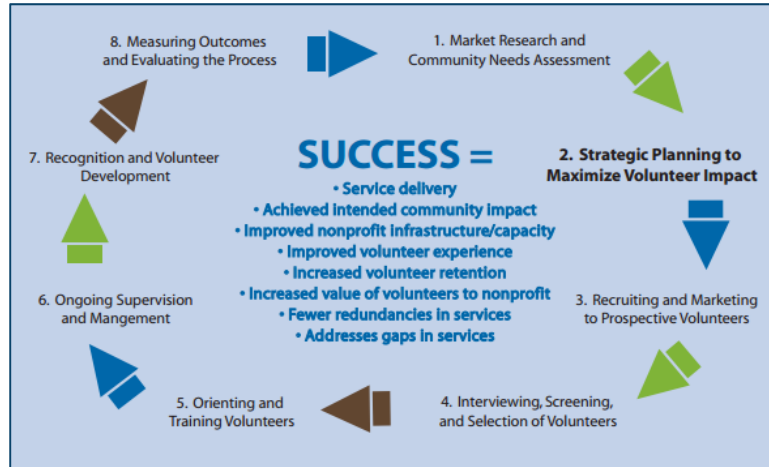
“Volunteers bring tremendous value to nonprofits that plan for and manage them effectively.”

Successful applicants will effectively engage and track volunteers and increase organizational volunteer management practices. Applicants must develop practices in at least two of eight areas or functions for effectively managing volunteers as defined in the report *Volunteering Reinvented: Human Capital Solutions for the Nonprofit Sector*.

Corporation for National and Community Service, 2007, page 4.
http://www.nationalservice.gov/pdf/07_0719_volunteering_reinvented.pdf



VOLUNTEER MANAGEMENT FUNCTIONS



Market Research and Community Needs Assessments
Strategic Planning to Maximize Volunteer Impact
Recruiting and Marketing to Prospective Volunteers
Interviewing, Screening, and Selecting Volunteers
Orienting and Training Volunteers
Ongoing Supervision and Management
Recognition and Volunteer Development
Measuring Outcomes and Evaluating the Process

ELIGIBLE FLORIDA COMMUNITIES

The Three Rural Areas of Opportunity/Rural Communities:

Northwest Rural Communities: Bay, Calhoun, Franklin, Gadsden, Gulf, Holmes, Jackson, Liberty, Okaloosa, Wakulla, Walton and Washington

North Central Rural Communities: Baker, Bradford, Citrus, Columbia, Dixie, Gilchrist, Hamilton, Jefferson, Lafayette, Levy, Madison, Putnam, Sumter, Suwannee, Taylor and Union

South Central Rural Communities: Charlotte, DeSoto, Glades, Hardee, Hendry, Highlands, Indian River, Monroe, Okeechobee and the Palm Beach communities of Pahokee, Belle Glade and South Bay



volunteerflorida

RCAF ELIGIBLE RURAL COUNTIES

Baker	Indian River
Bay	Jackson
Bradford	Jefferson
Calhoun	Lafayette
Charlotte	Levy
Citrus	Liberty
Columbia	Madison
DeSoto	Monroe
Dixie	Okaloosa
Franklin	Okeechobee
Gadsden	Putnam
Gilchrist	Sumter
Glades	Suwannee
Gulf	Taylor
Hamilton	Union
Hardee	Walton
Hendry	Wakulla
Highlands	Washington
Holmes	



RCAF GRANTEES 2016-2017

Big Brothers Big Sisters of the Big Bend, Inc.	Gadsden, Wakulla counties	Northwest	Youth Mentoring Program
Big Brothers Big Sisters Sun Coast, Inc.	Immokalee	South Central	Beyond School Walls
Franklin's Promise Coalition, Inc.	Franklin County	Northwest	Z's, Y's and Skills-Based Volunteers
ICE Foundation, Inc.	Gadsden, Wakulla counties	Northwest	ICE- Professionals Reaching Out
Junior Achievement Tampa Bay, Inc.	Highlands County	South Central	Junior Achievement Career Success ROTC
Monticello Opera House, Inc.	Jefferson	Northwest	Science Technology Engineering Arts and Math School-Based Initiative
Unity Family Community Center, Inc.	Levy	North Central	Project Uplift
United Way Palm Beach County, Inc.	Pahokee, Belle Glade, South Bay	South Central	Glades Mentoring
Boys & Girls Club of North Central Florida	Taylor	Northwest	BGC Tutoring
Communities in Schools-Bradford County	Bradford	North Central	CIS- Bradford County
Tallahassee Community College	Gadsden, Wakulla	Northwest	Take Stock in Children
United Way of Collier County	Immokalee	South Central	Grow Up Great Early Childhood Volunteer Program

SPECIAL CONSIDERATION

Special consideration will be given to applicants providing educational programming centered on college preparation and on-time graduation in one of these areas:

- **Academic Achievement**: Mentoring, tutoring, test preparation or study skills.
- **Financial Management**: College affordability, financial aid opportunities or financial literacy skills.
- **Advising**: Career exploration and planning, professional development or range of post-secondary options.



volunteerflorida

PERFORMANCE MEASURES

1) Program Capacity:

Grantees will show an increase in capacity in at least two areas over the course of the contract period:

- Number of children or youth served
- Number of volunteers recruited and/or retained
- Types of services offered to children or youth
- Number of services provided per children or youth

2) Proficiency in Volunteer Management Practices:

Grantees will:

- Show an increase in effective volunteer management practices as measured by the pre/post assessment in Appendix B (1 of 3) - Reporting Requirements: <http://www.volunteerflorida.org/grants>.
- Establish or update a volunteer management plan, based on the volunteer management practices the grantee has identified to develop.



volunteerflorida

BUDGET INFORMATION

Funds awarded to grantees are intended to be used for capacity building activities to develop or strengthen volunteer programs.

Respondents may request a minimum of \$5,000 up to a maximum of \$10,000 in funding. Respondents must provide a 25% cash or in-kind match

The full grant amount and match should be allocated to the following budget categories:

- Training and Support Expenses
- Travel Expenses
- Technology/Equipment Expenses

Grantees are required to provide a 25% in-kind and/or cash match.



APPLICATION INSTRUCTIONS



volunteerflorida

RURAL COMMUNITY ASSETS FUND ANTICIPATED TIMELINE

Request for Proposals opens – Monday, May 22, 2017

Proposal technical assistance call – Thursday, May 25, 2017, 10 a.m. EST

Proposals due to Volunteer Florida – Wednesday, June 21, 2017, 5 p.m. EST

Proposal review and scoring – Thursday, June 22, 2017 – Wednesday, July 5, 2017

Notice of Intent to Award posting – Thursday, July 6, 2017 – Monday, July 10, 2017

Contracts provided to successful respondents – Friday, July 21, 2017

RCAF contract overview conference call – Monday, July 24, 2017, 10:30 a.m. EST

Anticipated date of Contract execution – Tuesday, August 1, 2017

RCAF Training - required for grantees – Early Fall, TBA

Contract period ends – June 30, 2018



QUESTIONS?



E-MAIL- RCAF@VOLUNTEERFLORIDA.ORG

